



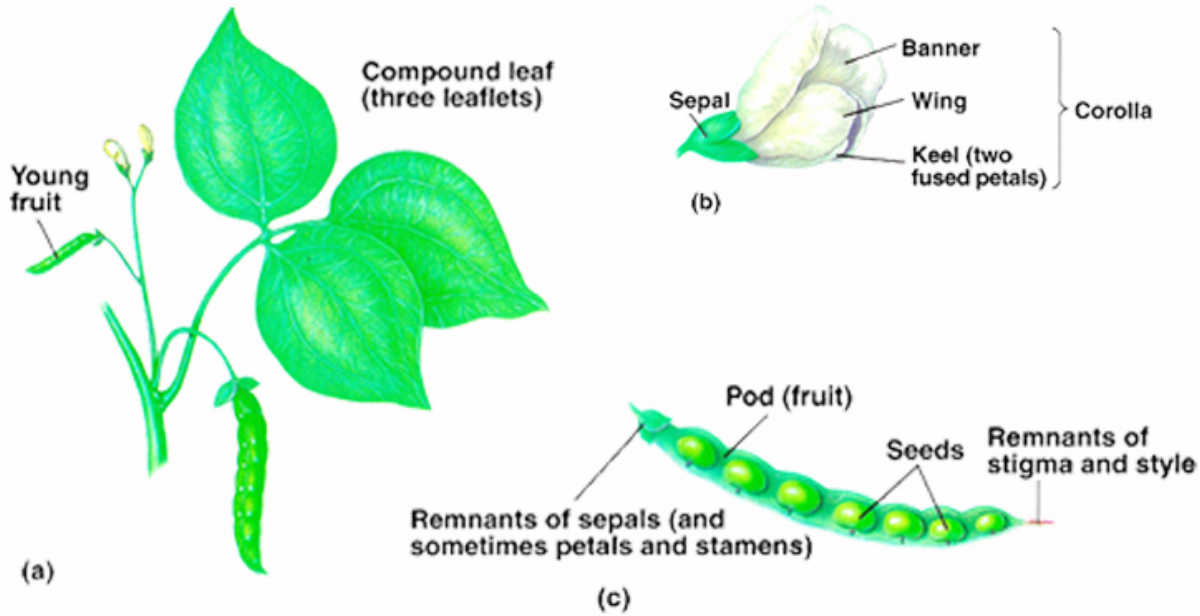
Cut book out on solid lines; fold on dotted lines.



Cut book out on solid lines; fold on dotted lines.

Color the images in the light purple and white colors of the sweet pea flower. For the first bi-fold, use the inner page to describe how and why the sweet pea vine climbs. List a few common items or materials used as trellises. Then, for the second bi-fold, research the special characteristics of the flower and describe what is unique about the sweet pea flower on the inner right flap. Use the left flap to draw a diagram and label the parts of the flower, including the banner, sepal, stamens, corolla, keel and wings. If you prefer an "official" diagram, you can cut and paste the two on the following page.

Beans, beans, beans...



Copyright © The McGraw-Hill Companies, Inc. Permission required for reproduction or display.

